

# Greater Philadelphia

## VALLEY FORGE DENTAL CONFERENCE®

**FRIDAY, OCTOBER 28, 2022**  
**VALLEY FORGE CASINO RESORT**  
**6 HRS CE CREDIT**

**Class: 8:30 AM - 4:00 PM, Includes lunch**



**FEATURING: Barbara J. Steinberg, DDS**  
Clinical Professor of Surgery at Drexel University College of Medicine, as well as Adjunct Associate Professor of Oral Medicine at the University of Pennsylvania School of Dental Medicine. Dr. Steinberg specializes in the treatment of medically complex patients and woman's health issues.

### ANOTHER MEMBER "FREE" CE EVENT!\*

\*Sponsored by the 2nd District Dental Association - This event is free to verified members of Bucks, Chester, Delaware, Lehigh, Montgomery and Northampton County Dental Societies.

### THE 4 "S's" OF OPTIMAL AGING POST-COVID:



• SEX • SLEEP • STRESS • SOCIAL NETWORKS

Dr. Steinberg will present the impact of sex, sleep, stress on disease and aging post-COVID. The importance of social networks, optimism and laughter and their benefit to successful aging will be discussed. Unfortunately, the pandemic has had a negative impact on these parameters for successful aging. In a fun and entertaining format, participants will learn how to get on the road to aging well in these post-COVID times.

#### Learning Objectives:

- Discover the commonalities of successful aging and disease prevention.
- Discuss the impact of sex, stress reduction and sleep in maintaining a healthy life in these post-COVID times.
- Understand how optimism, strong social networks, and life filled with laughter create the healthiest lifestyles.

SLEEP • STRESS • SOCIAL NETWORKS • SEX • SLEEP • STRESS

### INTIMATE PARTNER VIOLENCE (IPV) POST-COVID LOCKDOWN

#### INTIMATE PARTNER VIOLENCE POST- COVID LOCKDOWN

Emotional recovery period post-COVID may be prolonged for those who worked to keep feelings of physical and mental fragility at bay during the pandemic. For some, marital, partner and familial stressors have gone from normal tensions to intimate partner violence (IPV). The stay-at-home restrictions, preventing the spread of COVID-19, increased these incidents of IPV.



#### Members of the dental team will learn:

- The incidence, risk factors and manifestations of IPV
- Identify oro-facial and head and neck findings caused by physical abuse
- Communication techniques to approach patients with suspected trauma secondary to IPV

### INTIMATE PARTNER VIOLENCE (IPV) POST-COVID LOCKDOWN

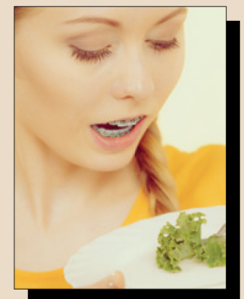
## EATING DISORDERS:

### MEDICAL, DENTAL AND ORAL HEALTH CONSIDERATIONS

Eating disorders represent a complex spectrum of chronic illnesses, with medical and psychologic complications that lead to the second highest mortality of all psychiatric disorders. Members of the dental team play an integral role in helping to identify those patients with undiagnosed eating disorders.

#### Learning Objectives:

- The attendee will gain an understanding of the psychologic and medical issues associated with eating disorders.
- The attendee will be able to identify oro-facial manifestations associated with eating disorders.
- The attendee will learn how to address and manage the dental issues associated with eating disorders.
- The attendee will gain an appreciation of the negative impact that COVID-19 has had on eating disordered individuals.



REGISTER ONLINE AT **WWW.GPVFDC.ORG**



Second District Dental Association of Pennsylvania/GPVFDC (Locally) Approved PACE Program Provider for FAGD/MAGD credit. Approval does not imply acceptance by any regulatory authority or AGD endorsement. 1/1/2022 to 12/31/2022 - Provider ID# 212416